

# 惠齿

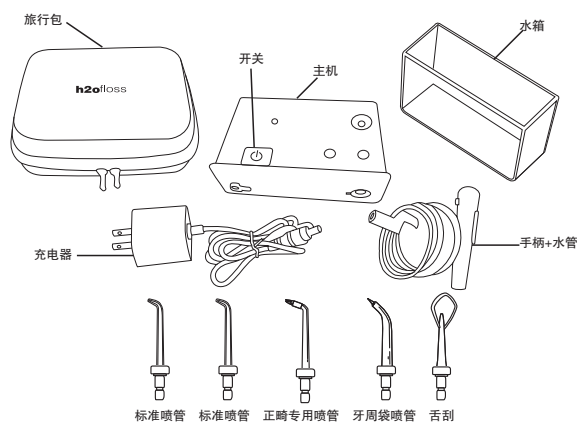
便携式(充电式)  
冲牙器(口腔冲洗器)

http://www.h2ofloss.net  
咨询电话: 400 833 1118

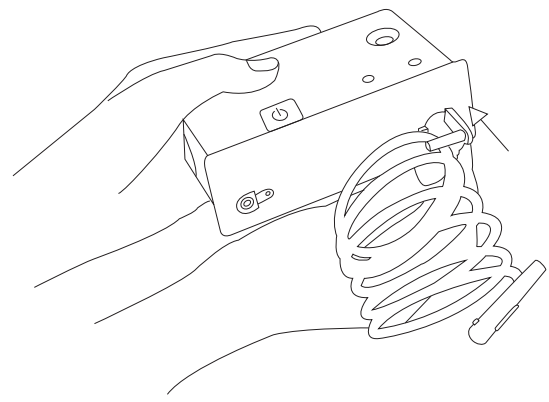
深圳市宝丰通电器制造有限公司

## 快速使用指南

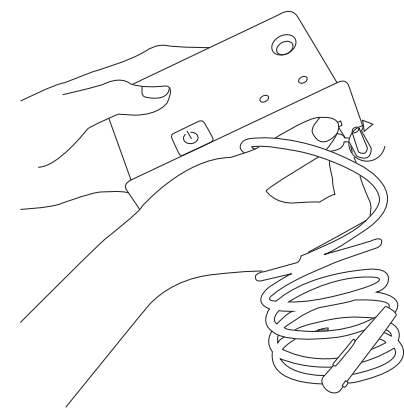
1 打开包装, 应包括如下配置:



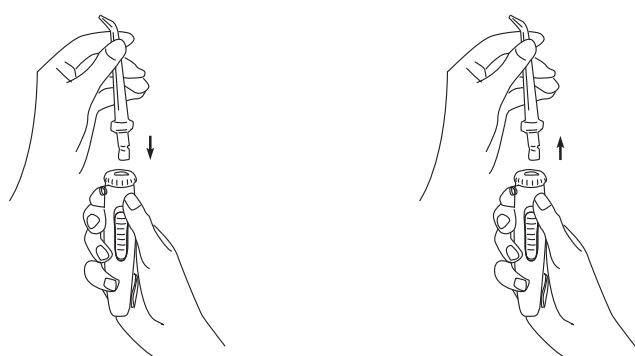
2 将水管连接装置插入主机孔。



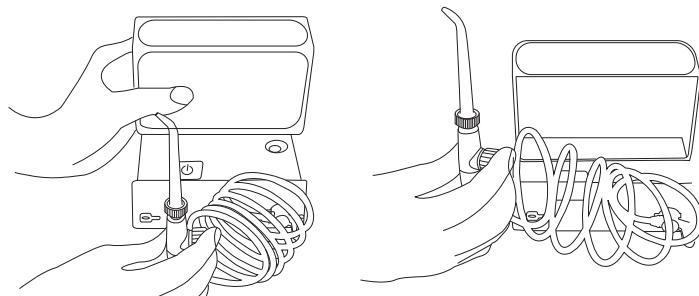
3 将水管连接装置顺时针转动90°, 到锁死位置。这时, 连接装置上的小柱形正向上。反方向则可取下。



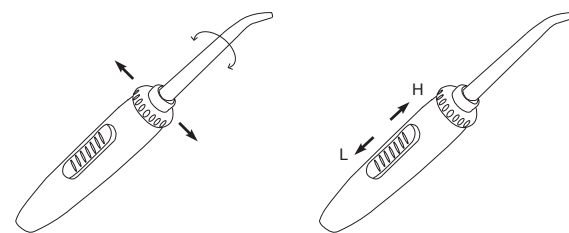
4 将喷管插入手柄, 并安装到位。按住喷管弹出钮, 可取下喷管。



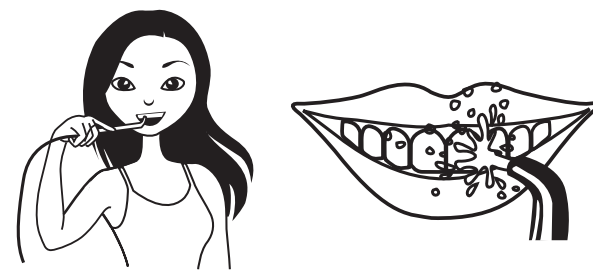
5 水箱装水, 水箱孔与主机孔要对准。用力将水箱按在主机上。



6 通过转动手柄顶部的旋钮来控制水流方向。通过上下滑动手柄上的压力控制键来控制水流的大小。



7 冲洗牙齿和牙龈。



充电器规格:

输入: 100-240V 50/60Hz

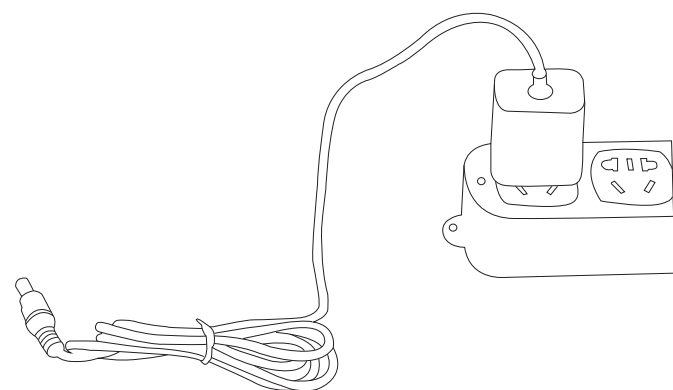
输出: 150mA/小时

电池规格:

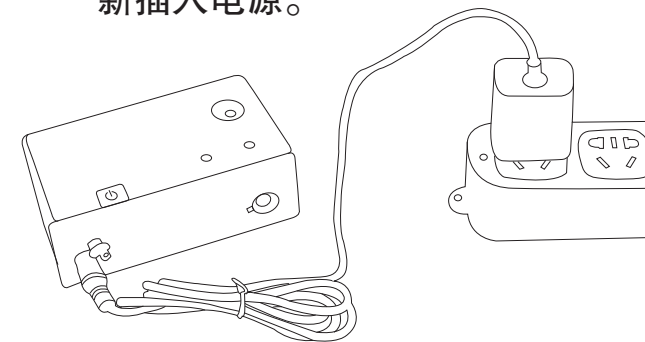
2000mA Ni-MH

## 充电指南

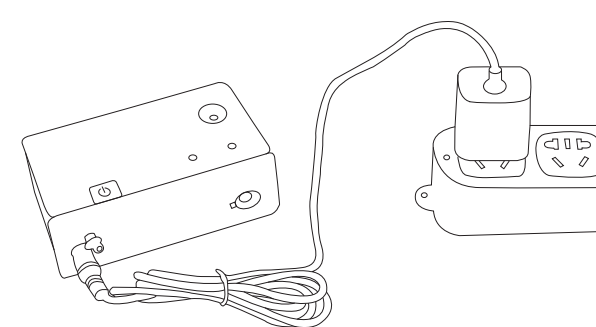
1 将充电器插在电源插座上, 这时充电器上绿灯亮起。



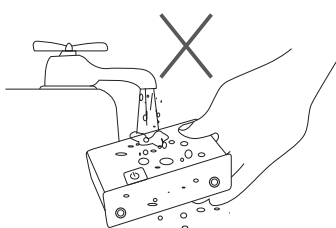
2 将充电器另一端插入主机充电孔, 这时红灯亮起, 充电开始。充电过程必须保持红灯亮, 如果红灯不亮, 请转动充电插头, 或拔出充电器重新插入电源。



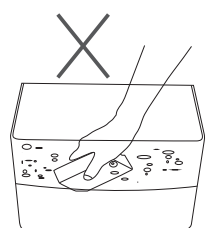
3 充电过程约需15小时, 最长不要超过20小时。



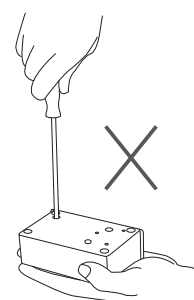
## 重要安全事项



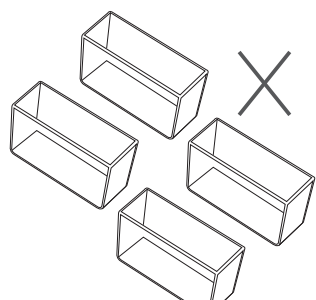
禁止用水冲洗主机



禁止主机浸泡入水



禁止打开主机



两小时内连续使用不超过四箱水

本产品属电器, 应遵循一般电器使用的安全守则, 特别是有儿童在场时, 请采取下列安全措施。

请在使用前阅读本说明。

**危险:**

为降低触电危险, 请注意以下事项:

- 勿用湿手插拔充电器插头。
- 勿将产品浸入水或其他液体中。
- 在每次使用充电器前检查电源线是否遭到损坏。
- 勿在洗澡时使用。
- 勿将产品存放于易掉落或易被拉扯入浴盆、淋浴间或盥洗池的地方。
- 如果产品掉落到水中或其他液体中, 请立即拔掉电源插头, 切勿接触。

**警告:**

为减少灼伤、触电、火灾、人体组织受伤或受损的危险, 请注意以下事项:

- 切勿在下列情况下使用本产品: 电源线或插头损坏、产品工作不正常、产品被摔坏或落入任何液体中。此时, 应将产品返还到授权的服务中心或本公司。

- 对儿童及有特殊需要的人员使用本产品, 应予以密切指导和监督。
- 充电器的电线和插头应远离受热表面。
- 勿在使用氧气或气雾剂的区域使用本产品。

**使用本产品特别注意:**

- 勿将水注入舌下、耳朵等敏感部位。本产品产生的压力较大, 可能对这些部位造成严重伤害。请参阅“使用指南”了解正确的使用方法。
- 按照本说明或者专业人士的建议使用本产品。

- 只能使用本公司推荐的喷头及配件。
- 水箱中只能注入水或者其他推荐的溶液。
- 切勿在任何开口或者软管中放入或插入异物。
- 在使用时勿佩戴任何牙饰、鼻饰。如有佩戴, 请在使用前摘除。
- 如果医师或心脏病专家建议在牙科前服用抗生素, 应在使用本产品之前, 向您的牙医咨询。

务必谨记上述说明

**产品的保养维护**

本产品需要清洁时, 用软布和中性无磨擦清洁剂擦拭。水箱可用洗碗机或洗碗溶液清洗。清洁产品前, 请将充电器的插头从电源中拔出。取下水箱, 然后运行机器, 直到其中没有任何残留物。用户不能自行对本产品的任何电气元件进行维修, 也无需进行任何例行保养维护。本产品的维修工作只能由本公司或授权服务中心来完成。 备换的喷射头/附件可咨询当地代理商, 或直接联系本公司。

**电池的保养维护**

第一次使用前, 请将电池充满。在充电时, 确保主机开关处于“关”的状态。如果主机开关处于“开”的状态, 则不可充电。不要使用非本公司提供的充电器, 特别不要使用快速充电器, 因为它会降低电池的使用寿命。本产品电池使用了符合环保要求的镍氢充电电池。虽然如此, 电池仍有重金属产生, 当电池寿命到期需要报废时, 请按报废时所在国家的法律或规定处理报废的电池。请注意, 已报废的电池不可循环再用。旧电池报废后, 需要新电池时, 请用户与本公司联系。

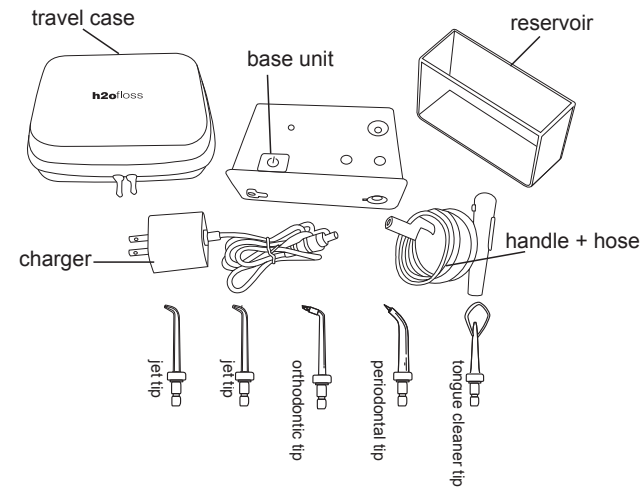
# h2ofloss

**Cordless** oral irrigator  
model: hf-3 premium

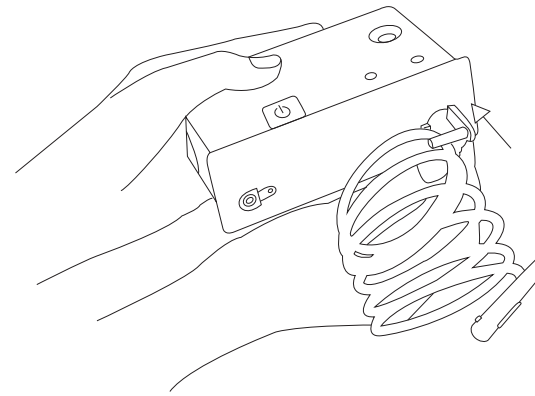
http://www.h2ofloss.net  
http://www.h2ofloss.com  
manufacturer : shenzhen BFT electrical manufacturing co.,ltd

## QUICK START GUIDE

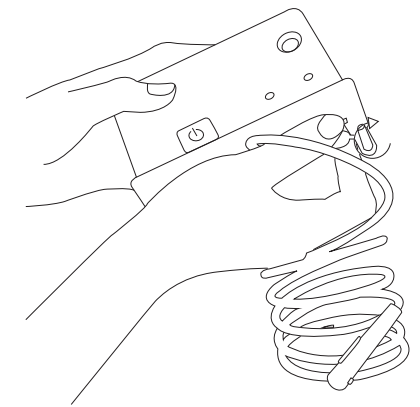
**1** Includes:



**2** Insert the base of the water hose into the hole on the front of the unit.



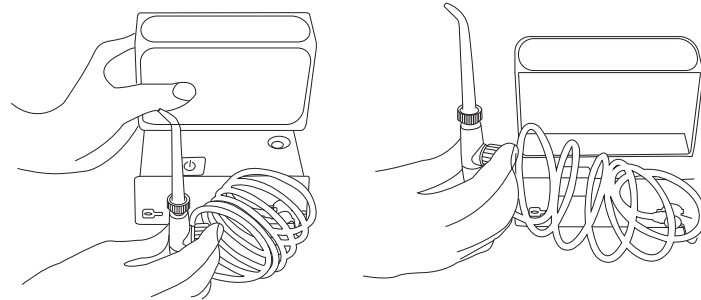
**3** Twist the base one quarter turn to the right to lock in place.



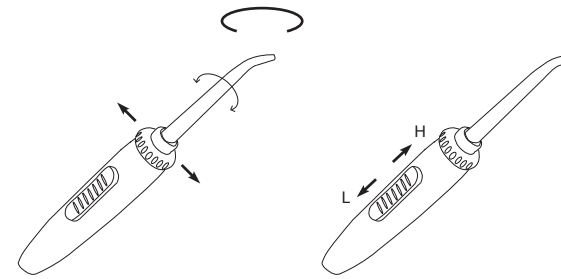
**4** Connect the tip to the handle by pushing with a twisting motion. To remove tip from the handle, press the tip eject button and pull tip from handle.



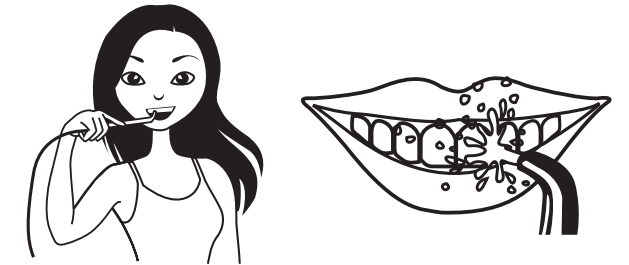
**5** Remove the reservoir, and fill it with lukewarm water. Center the reservoir over the base and push down the lock in place.



**6** Direct the stream by turning the knob at the top of the handle, and slide the pressure control knob to setting water pressure.



**7** Clean teeth and gums.

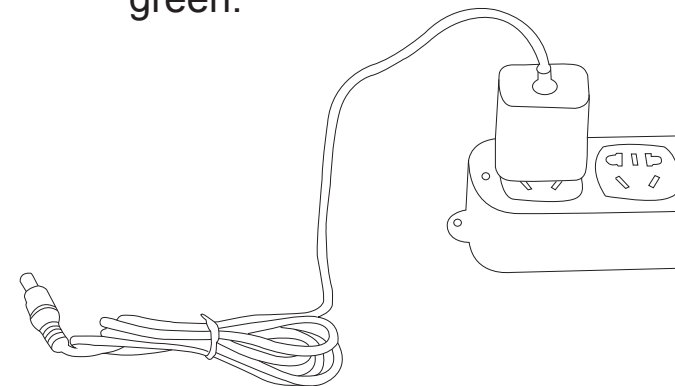


charger:  
input: 100-240V 50/60Hz  
output: 150mA/h

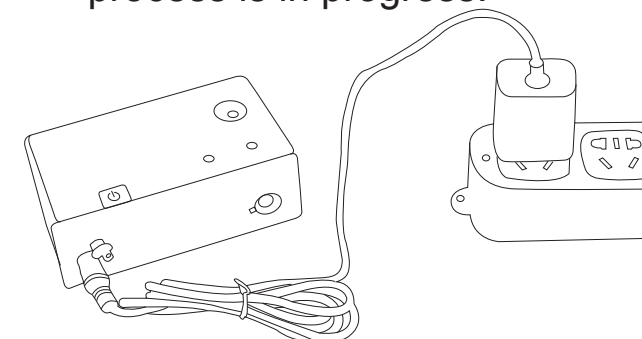
battery:  
2000mA Ni-MH

## CHARGE GUIDE

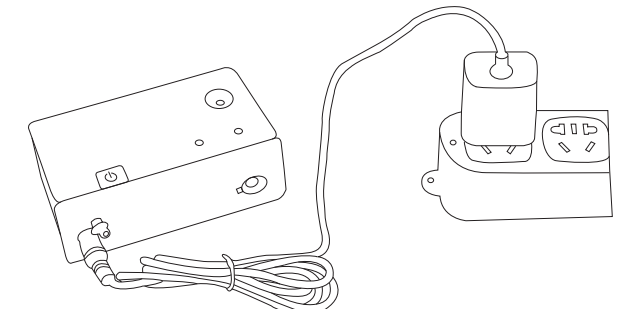
**1** Plug in the charger to the electrical power outlet, the LED indicator will flash green.



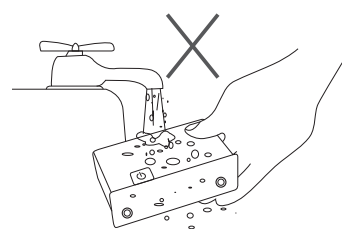
**2** Plug the other round end of the charger into the unit's front side charging hole, the LED indicator will flash red. When red LED is on, the charging process is in progress.



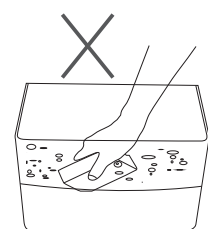
**3** A full charge requires 15 hours. Each charge must not exceed 20 hours.



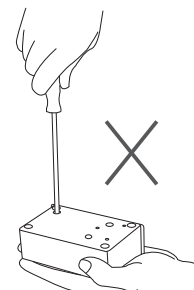
## SAFETY & GENERAL INFORMATION



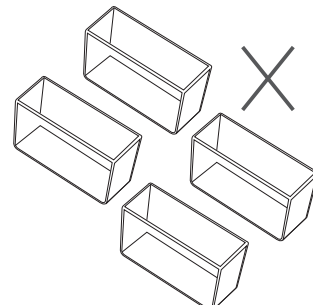
Do not wash with water.



Do not submerge the unit in water or other liquid.



Do not dismantle the unit.



Do not use the product for more than four tanks water in each two-hour period.

### IMPORTANT SAFETY INSTRUCTIONS

When using electrical appliances, especially when children are present, precautions should always be followed, including, but not limited to the following:

**READ ALL INSTRUCTIONS BEFORE USING.**

#### DANGER:

To reduce the risk of electrocution:

- Always unplug this product immediately after use.
- Do not handle charger with wet hands.
- Periodically check the cord for damage.
- Do not use the unit while bathing.
- Do not place or store the unit where it can fall or be pulled into a tub, sink, or toilet.
- Do not reach for a unit that has fallen into water. Unplug immediately.

#### WARNING:

To reduce the risk of burns, electrocution, fire, or injury to persons:

- Do not plug this device into voltage system that is different from the voltage system specified on the device or charger.
- Never operate this product if it has a damaged cord or plug, if it is not working properly, if dropped or damaged, or dropped into water.
- Use of a battery other than the special battery designed for this appliance could result in battery explosion.
- Close supervision is necessary when this product is used by, on or near children or adults requiring assistance.
- Do not direct water under the tongue, into the ear, nose or other delicate areas. This product is capable of producing pressures that may cause serious damage in these areas. See operating instructions for correct usage.

- Use this product only for its intended use as described in the manual or as recommended by your dental professional.
- Do not use attachments not recommended by the manufacturer.
- Fill reservoir with warm water or other mouthwash or prescribed solution as recommended by your dental professional.
- Never drop or insert any object into any opening or hose.
- Keep charging unit and cord away from heated surfaces.
- Do not use while wearing any oral jewelry. Remove prior to use.
- Do not use where oxygen or aerosol sprays are being administered. to the water in the reservoir as doing so will damage your h2ofloss.
- If you have had oral or periodontal surgery in the previous twelve months, contact your dentist prior to use.

#### SAVE THESE INSTRUCTIONS.

#### Battery Care

To charge your h2ofloss, plug the appliance into an electrical outlet. Make sure you push the switch into the "OFF" position before charging. The unit will not charge if the switch is in the "ON" position. A full charge will take at least 15 hours. Do not run the batteries down completely as this may shorten the lifespan of the batteries and will require charging the unit for 15 hours to obtain a full charge. If the h2ofloss is to be stored for an extended period of time, charge it for 15 hours before storing. Never store the h2ofloss for extended periods unless it is fully charged.

#### Battery Disposal

This product is provided with a nickel-hydride battery, which does not contain any harmful heavy metals. At the end of its useful life, please recycle the unit at your nearest approved recycle center or disposing locations in accordance with local regulations.

#### Limited 1-Year Warranty

h2ofloss will repair or replace (at our option) your unit free of charge for 12 months from the date of purchase if the appliance is defective in workmanship or materials. This guarantee does not cover: damage due to improper use, normal wear or use as well as defects that have a negligible effect on the value or operation of the appliance.